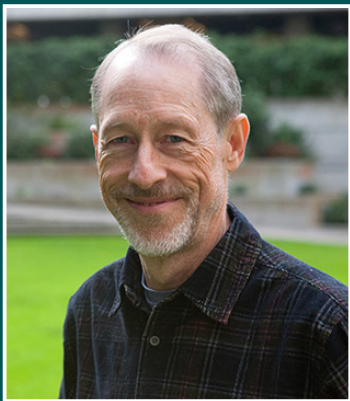
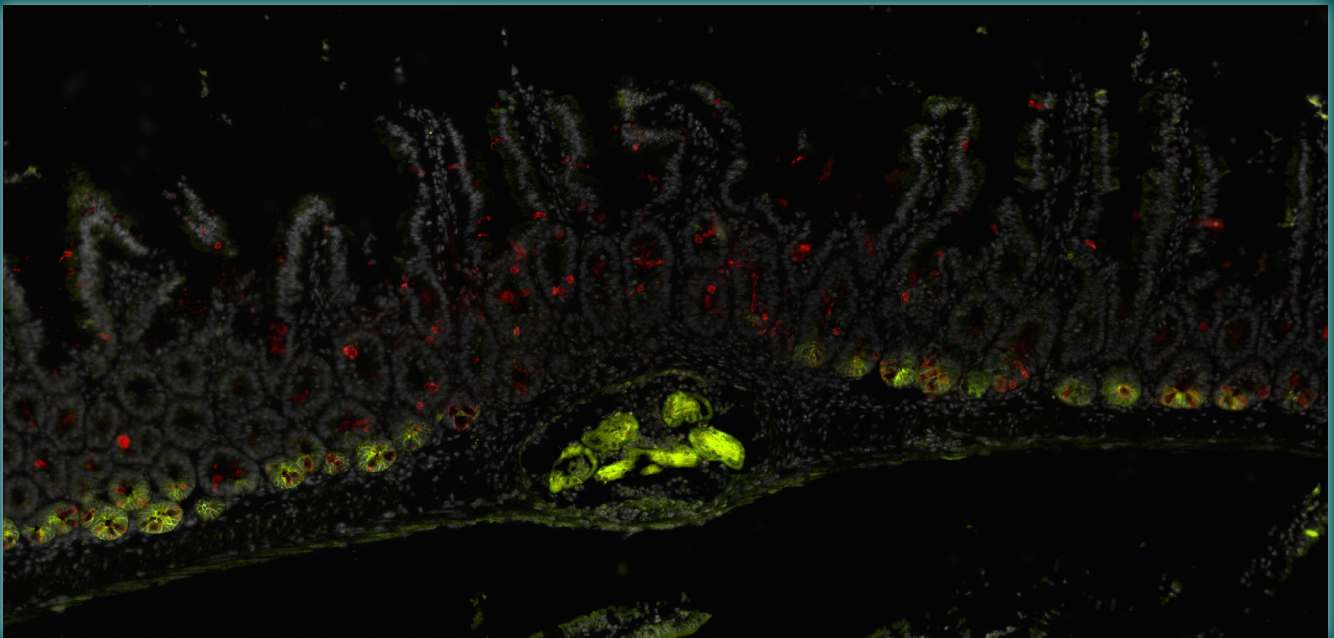


# Academic Senate

## FACULTY RESEARCH LECTURE BASIC SCIENCE

### The Conundrum of Innate Allergy: A Wormy Affair



**Richard Locksley, MD**

Sandler Distinguished Professor, Medicine  
Howard Hughes Medical Institute Investigator  
Departments of Medicine and Microbiology & Immunology  
School of Medicine

**UCSF** Academic  
Senate

**APR 23 3:30-5:00PM HSW-300/ZOOM**

Health Sciences West, Room 300 (HSW-300) on Parnassus Campus

Zoom: <https://tiny.ucsf.edu/apr23frl> • Password: 998598