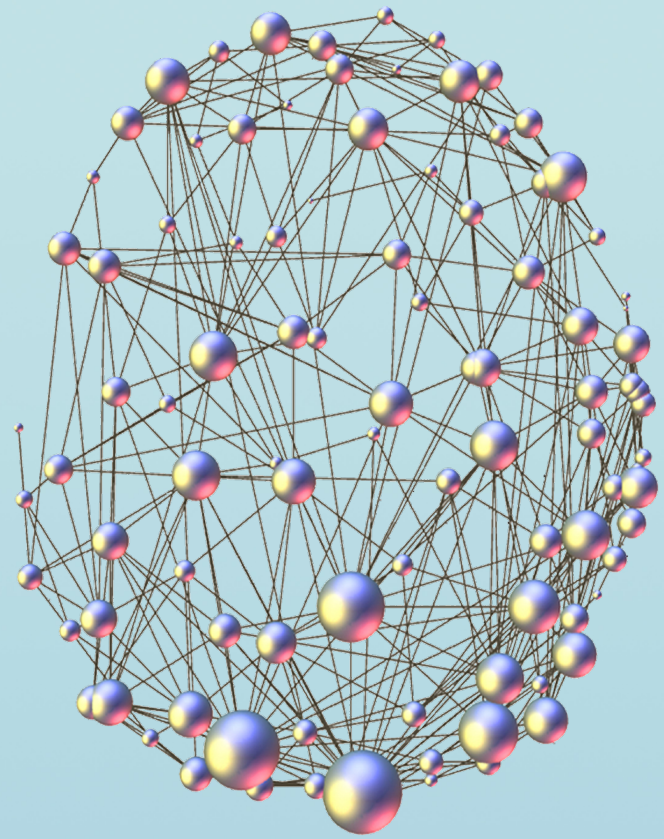
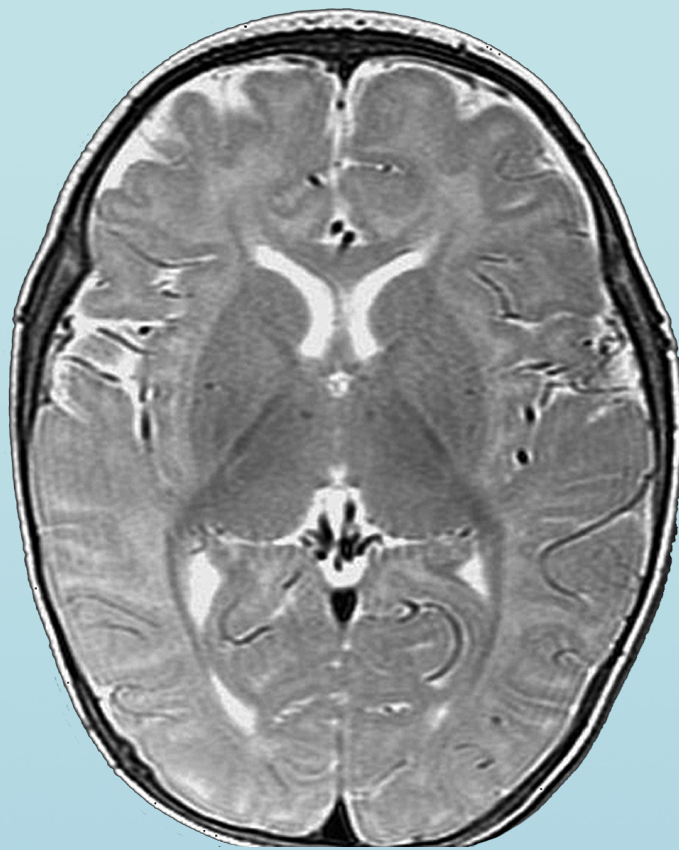
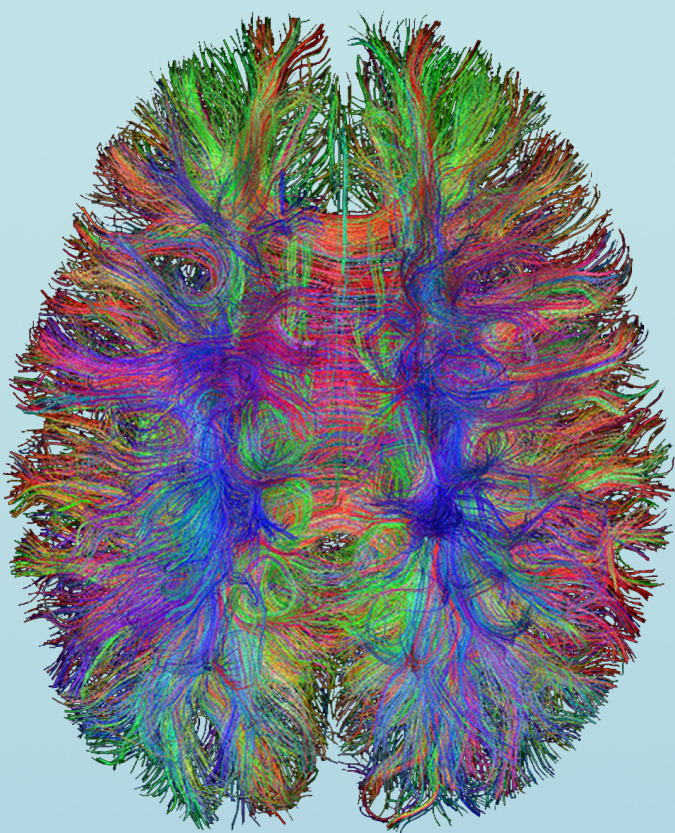


THE ACADEMIC SENATE

FACULTY RESEARCH LECTURE CLINICAL SCIENCE

Brain Malformations: from Pathology to Pathways with MRI as a Guide



A. James Barkovich, MD

Professor in Residence
Chief of Pediatric Neuroradiology
Departments of Radiology, Pediatrics,
Neurology, and Neurological Surgery
School of Medicine

UCSF

NOV 5 COLE HALL 3:30 PM

Live Simulcast at senate.ucsf.edu | Reception to follow outside Cole Hall